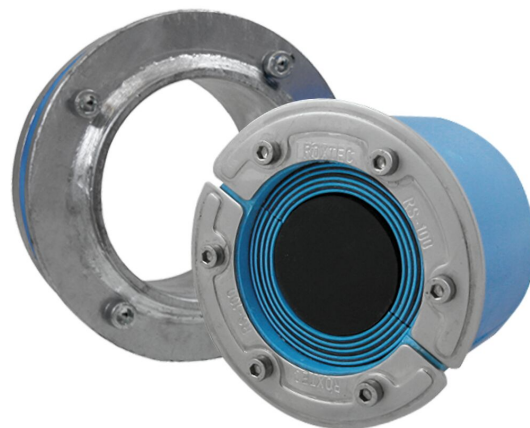




Bague Roxtec RS X

Le passage peut être utilisé lorsque le soudage n'est pas autorisé, recommandé ou désiré.

Le Roxtec RS X est une bague sans soudure avec un manchon pour câbles ou tuyauteries uniques. Le passage est idéal pour les rénovations et lorsque le soudage n'est pas autorisé, recommandé ou désiré. Le manchon est doté d'un joint en caoutchouc à l'extérieur qui s'étend dans le trou pour une fixation solide, lorsque les boulons sont serrés. La bague RS X est adaptable à des câbles et tuyauteries de différentes tailles grâce aux couches pelables.



- Idéal pour la rénovation

Caractéristiques du produit



Coupe-feu



Étanche à l'eau



Étanche au gaz

Structure d'installation



Métal

Type de fixation



Trou existant

Classements et certificats

Feu

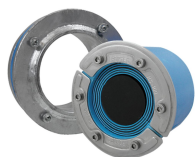
- CLASSE A conformément au code FTP IMO 2010

Étanchéité

- Gaz: 2,67 bars (catastrophique)
- Eau: 4 bars (catastrophique)

Éléments d'étanchéité

Éléments d'étanchéité



Kit RS X



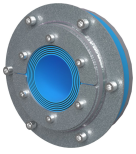
Lubrifiant Roxtec

Pour plus d'informations, veuillez consulter [roxtec.com](https://www.roxtec.com).

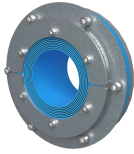


Kits de passage préconfigurés

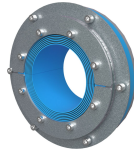
mm/kg



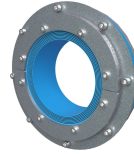
RS X 100 AISI316
WOC/GALV



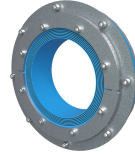
RS X 125 AISI316
WOC/GALV



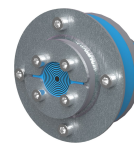
RS X 150 AISI316
WOC/GALV



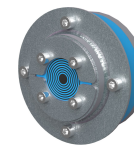
RS X 175 AISI316
WOC/GALV



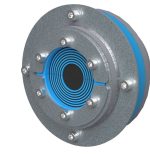
RS X 200 AISI316
WOC/GALV



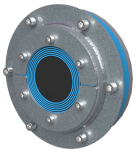
RS X 43 AISI316/GALV



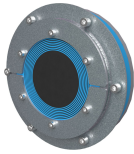
RS X 50 AISI316/GALV



RS X 75 AISI316/GALV



RS X 100 AISI316/GALV



RS X 125 AISI316/GALV

Titre	Configuration	Dimensions d'ouverture Ø	Poids	N° art.
RS X 100 AISI316 WOC/GALV	1x (48.0-70.0)	145 - 147	3	RSXG001001021
RS X 125 AISI316 WOC/GALV	1x (66.0-98.0)	170 - 172	4	RSXG001251021
RS X 150 AISI316 WOC/GALV	1x (93.0-119.0)	199 - 201	5.2	RSXG001501021
RS X 175 AISI316 WOC/GALV		220 - 222	5	RSXG001751021
RS X 200 AISI316 WOC/GALV		250 - 252	6.6	RSXG002001021
RS X 43 AISI316/GALV	1x (4.0-23.0)	82 - 84	0.8	RSXG100431021
RS X 50 AISI316/GALV	1x (8.0-30.0)	90 - 92	1.4	RSXG100501021
RS X 75 AISI316/GALV	1x (24.0-54.0)	115 - 117	2.2	RSXG100751021
RS X 100 AISI316/GALV	1x (48.0-70.0)	145 - 147	3.2	RSXG101001021
RS X 125 AISI316/GALV	1x (66.0-98.0)	170 - 172	2.8	RSXG101251021

The product information provided by Roxtec does not release the purchaser of the Roxtec system, or part thereof, from the obligation to independently determine the suitability of the products for the intended process, installation and/or use.

Roxtec gives no guarantee for the Roxtec system or any part thereof and assumes no liability for any loss or damage whatsoever, whether direct, indirect, consequential, loss of profit or otherwise, occurred or caused by the Roxtec systems or installations containing components not manufactured by an authorized manufacturer and/or occurred or caused by the use of the Roxtec system in a manner or for an application other than for which the Roxtec system was designed or intended.

Roxtec expressly excludes any implied warranties of merchantability and fitness for a particular purpose and all other express or implied representations and warranties provided by statute or common law. User determines suitability of the Roxtec system for intended use and assumes all risk and liability in connection therewith. In no event shall Roxtec be liable for indirect, consequential, punitive, special, exemplary or incidental damages or losses.

The Roxtec products are offered and sold in accordance with the conditions of the Roxtec General Terms of Sales. The latest version of the Roxtec General Terms of Sales can be downloaded from <https://www.roxtec.com/en/about-us/about-roxtec/general-terms-of-sales/>

We reserve the right to make changes to the product and technical information without further notice. Any errors in print or entry are no claims for indemnity. The content of this publication is the property of Roxtec International AB and is protected by copyright.

This document was generated on: 2024-04-06